



**HOMES  
DELUXE**

+34 649 669 172  
info@homes-deluxe.com



Near the sea

Beach

Last property



## Murcia (Costa Cálida) - San Pedro del Pinatar

New Build - Apartments

Ref. HD623

**369.000€**



3 BEDROOMS



2 BATHROOMS



82M<sup>2</sup>



COMMUNITY



IN PROCESS

[www.homes-deluxe.com](http://www.homes-deluxe.com)

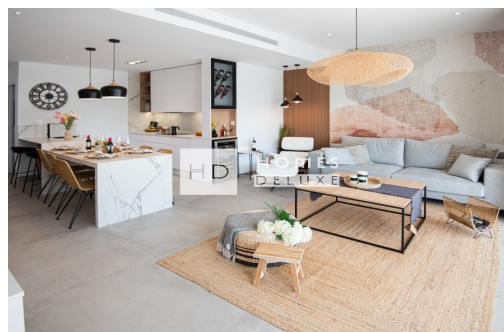
ADDRESS

Avenida de las Colinas, Urb. Las Colinas Golf  
03189 · Orihuela Costa (Alicante)



**HOMES**  
**DELUXE**

+34 649 669 172  
info@homes-deluxe.com



**LAST APARTMENT AVAILABLE** Brand new development of 3 bedroom apartments located in San Pedro del Pinatar (Murcia) close to all amenities and the beautiful beaches. The complex consists of ground floor apartments with a private garden and top floor apartments with a private rooftop solarium. The interiors boast a spacious open plan lounge and dining area with modern style kitchen, Master bedroom with en-suite bathroom, a further two double bedrooms and guest bathroom. The ground floor apartments have large terrace and garden areas to the front and rear of the property with private parking on the plot with an automatic door for access. The top floor apartments have a front terrace with an external staircase giving access to the large rooftop solarium of 77m<sup>2</sup> including summer kitchen, pergola, electric bbq, toilet, storage room, exterior shower and pre-installation for a jacuzzi, and there is a private parking space. All the propert...

## key features

- Bedrooms: 3
- Built: 82m<sup>2</sup>
- Energy Rating: In process
- Orientation: South
- Distance to airport: 40Km.
- Distance to Golf: 10Km.
- Bathrooms: 2
- Parking spaces: 1
- Year of construction: 2025
- Distance to beach: 1.5Km.
- Distance to amenities: 1Km.

## Features

- Air conditioning
- Communal swimming pool
- Heating
- Solarium
- Terrace
- Barbecue
- Garden
- Kitchen appliances
- Storage room

ADDRESS

[www.homes-deluxe.com](http://www.homes-deluxe.com)

Avenida de las Colinas, Urb. Las Colinas Golf  
03189 · Orihuela Costa (Alicante)